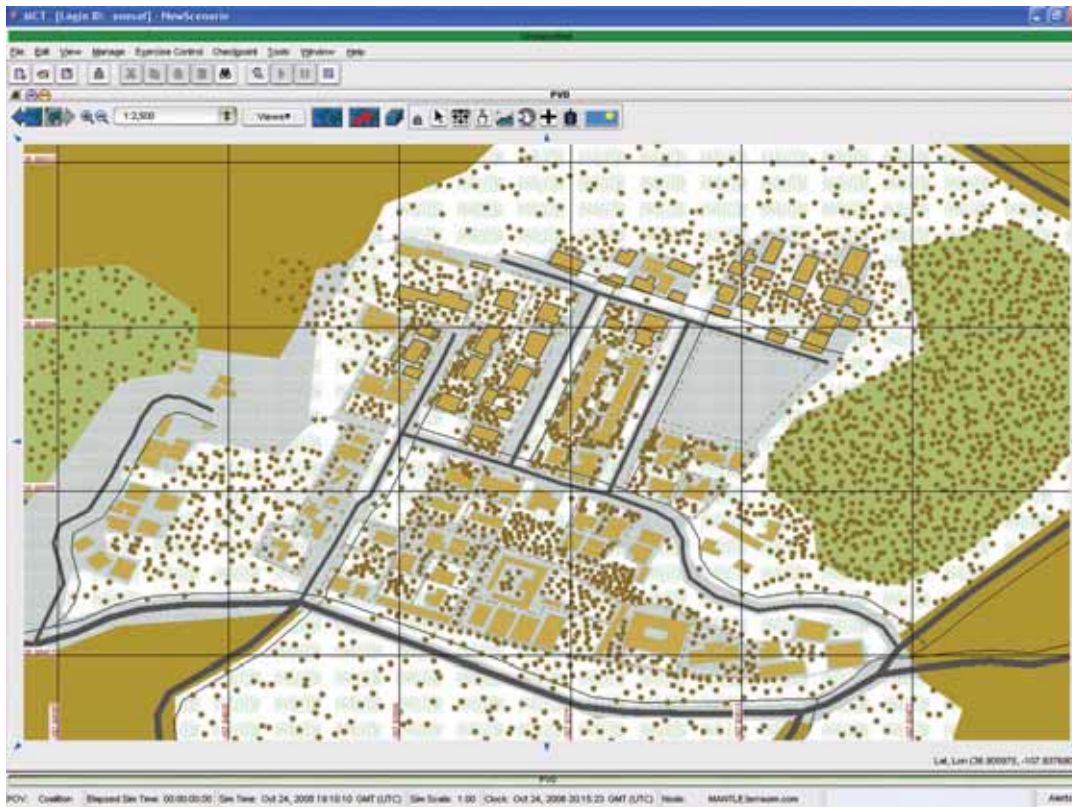
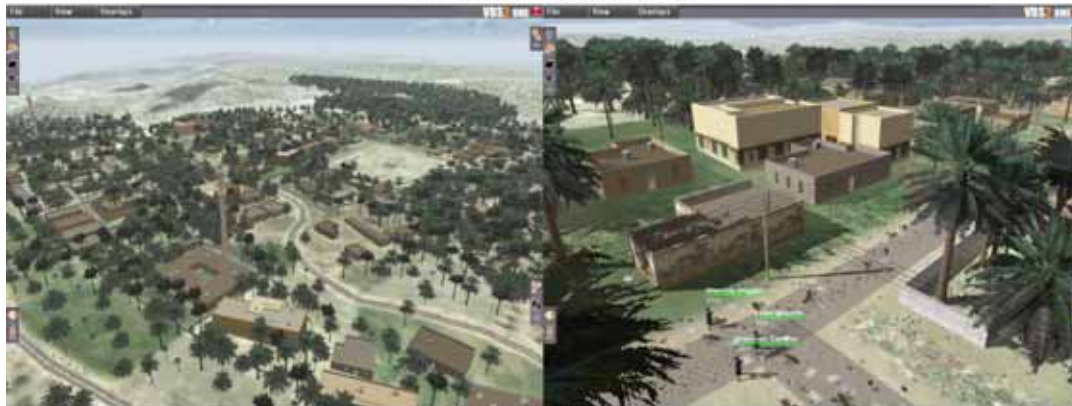


Support for OneSAF and Serious Games



Sample Desert Village in OneSAF



Sample Desert Village in VBS2

TerraSim, Inc. has developed an exporter for the Virtual Battlespace 2 commercial gaming system that supports detailed correlation with OneSAF Terrain Format (OTF) databases. Using a well-defined TerraTools® process flow graph, the OneSAF database content is automatically converted to the unique terrain requirements of the VBS2 runtime. The TerraTools Urban Details™ process converts roof clutter, free-standing walls, buildings with interiors, and power lines with wires into the equivalent VBS2 runtime format using user defined appearances and clutter. Both simple buildings and OneSAF UHRB buildings are fully supported, so that entities in each simulation have identical environments.

Models that are specifically constructed for VBS2 in any of the Bohemia Interactive toolsets can also be placed and correlated in the OneSAF and VBS2 environments, giving them the full range of runtime effects, including dynamic damage states. Models created in 3DStudioMAX can be converted using the TerraSim 3DStudioMAX plug-in.

High fidelity urban environments that are correlated in visual and constructive simulation are in high demand due to the emergence of serious game technology for training and mission rehearsal. The Sample Desert Database, shown here in the OneSAF MCT and the VBS2 runtime, brings together each of these important urban content components.

About TerraSim

TerraSim is a US owned high-technology company that provides software solutions and services for advanced visual simulation and database construction using a variety of geospatial source data. TerraTools®, their primary product, is available for Windows 2000, XP, and Vista.

TerraTools is used in the automated construction of dense urban environments for operations planning and situation assessment as well as to produce exercise databases covering hundreds of one degree geocells. TerraSim also provides database construction services and advanced technology development for both civilian and military customers.

TerraSim's TerraTours® product supports highly interactive geospatial query using 3D visualizations linked to a variety of collateral source data. Using GISLink™ technology, TerraTours users can automatically georeference and display information sources such as still photography, video streams, CAD design data, maps, and any web-enabled document.